

SMOKE BAFFLE Product Data Sheet

1. PRODUCT NAME

Smoke baffle system (draft curtain)

2. MANUFACTURER

Livers Bronze exclusively manufactures the smoke baffle system as described on this sheet.

Livers Bronze Co.

4621 East 75th Terrace

Kansas City, MO 64132

Phone: (816) 300 2828

Fax: (816) 300 0864

e-mail: livers@liversbronze.com

3. BASIC USE: Livers Bronze smoke baffle system is a pre-engineered component based smoke baffle system, shipped to the jobsite ready to install.

LIMITATIONS: Livers smoke baffle system is only limited by the materials from which it is fabricated.

Pre-engineered smoke baffle system should be assembled using the components listed:

Extruded aluminum hanger

1/2" or 3/8" clear tempered plate glass furnished by Livers Bronze for attaching to smoke baffle base.

Finishes: A wide selection of colors and textures in powder coat is available for aluminum components. Colors are selected from manufacturers standard color charts.

4. TECHNICAL DATA

Livers smoke baffle system conforms to IBC and ADA regulations.

5. INSTALLATION

Livers smoke baffle system must be attached with fasteners and to surfaces that are approved or selected by the manufacturer and shall be detailed on all shop drawings.

6. AVAILABILITY AND COST

Cost: Varies according to quantity and material. Further information may be obtained from Livers Bronze or one of their authorized representatives.

Availability: Livers smoke baffle system is subject to current delivery schedules. Each project must be reviewed before scheduling is available.

7. GUARANTEE

Livers Bronze warrants that its Livers smoke baffle system is of sound quality, conforming to standards as stated in part 4 hereof and is reasonably free of defects in material and workmanship. Inasmuch as Livers Bronze has no control over the installation of its products, no other warranty is expressed or implied. Livers Bronze Co. does not warranty against glass breakage.

8. MAINTENANCE

The surface of Livers Bronze material can be kept clean by the use of ordinary soaps and mild cleansers. Abrasive cleaners should not be used.

9. TECHNICAL SERVICES

Technical services are rendered direct from the Livers Bronze Company in Kansas City, Missouri.

10. FILING SYSTEM

Sweets Architectural file.

Sweets.com

Literature available on request.

AutoCAD details & specifications are available at: www.liversbronze.com

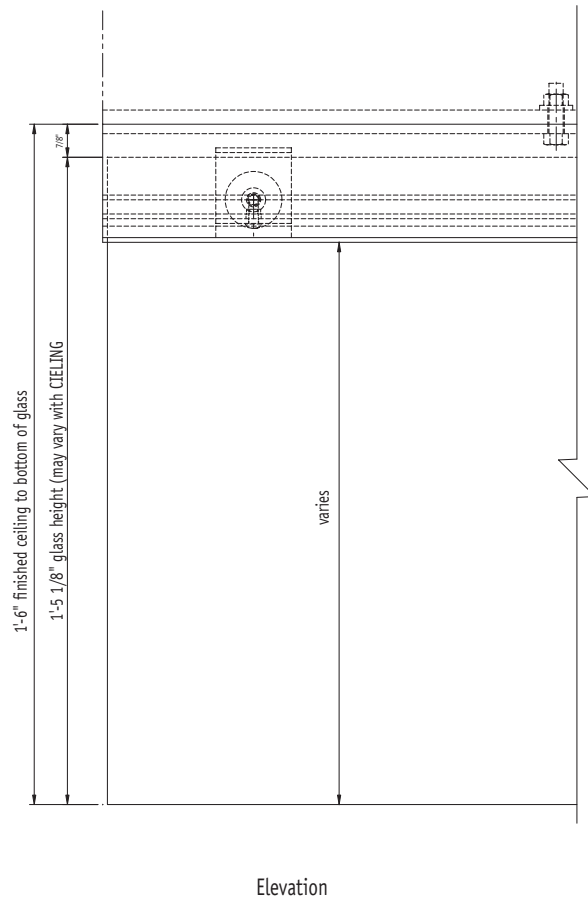
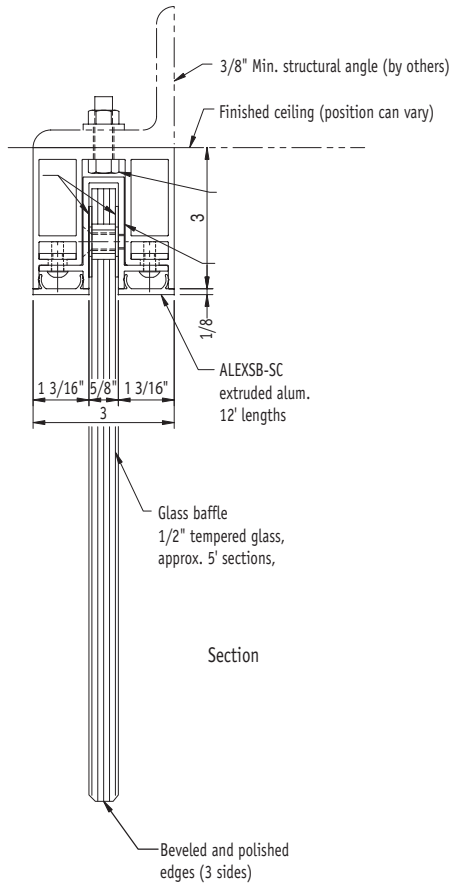
4621 East 75th Terrace
Kansas City, MO 64132

© 2008 Livers Bronze Co.

Phone: (816) 300 2828
Fax: (816) 300 0864
e-mail: livers@liversbronze.com



RAILING SYSTEMS



AutoCAD details & specifications are available at: www.liversbronze.com

4621 East 75th Terrace
Kansas City, MO 64132

Phone: (816) 300 2828
Fax: (816) 300 0864
e-mail: livers@liversbronze.com

© 2008 Livers Bronze Co.



RAILING SYSTEMS