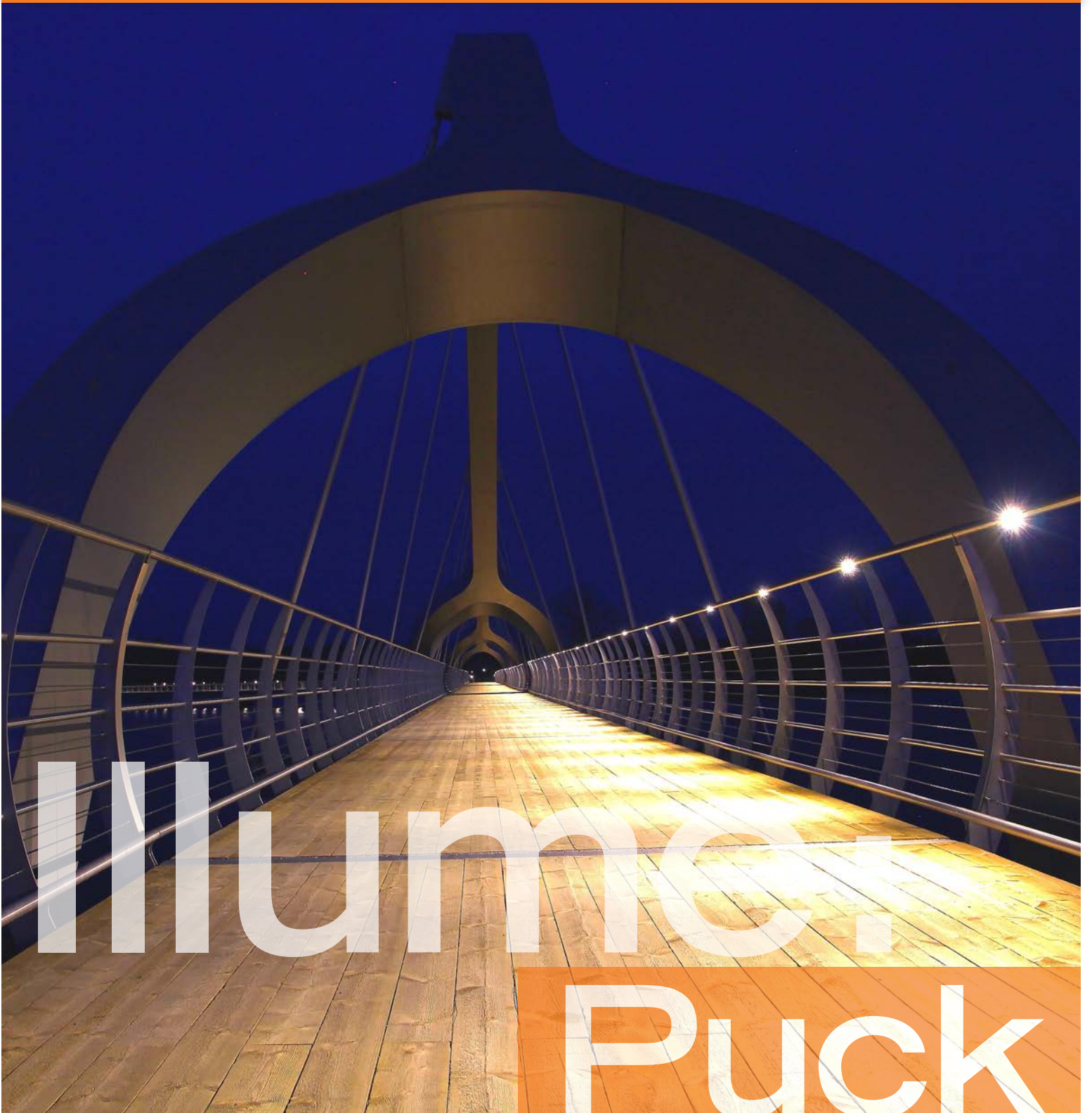




DISTINCTIVE RAILING SYSTEMS



Illumino: Puck

ILLUME: Puck

ILLUME Brings LED Illumination to Every Livers Bronze Handrailing System



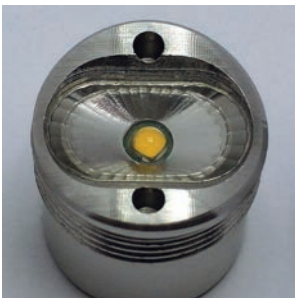
4621 East 75th Terrace
Kansas City, MO 64132

Phone: (816) 300-2828
Fax: (816) 300-0864
e-mail: livers@liversbronze.com

Ready, Willing and Able to Meet Your Specifications

ILLUME: Puck is designed with architectural integration in mind. The discreet "minipucks" come in your choice of beam angles, and are easily installed in a variety of shapes, surfaces and materials to create the perfect lighting effect for your project. Puck LED lights are also vandal resistant, making them an ideal choice for public area installations.

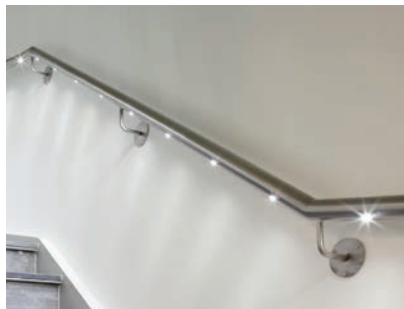
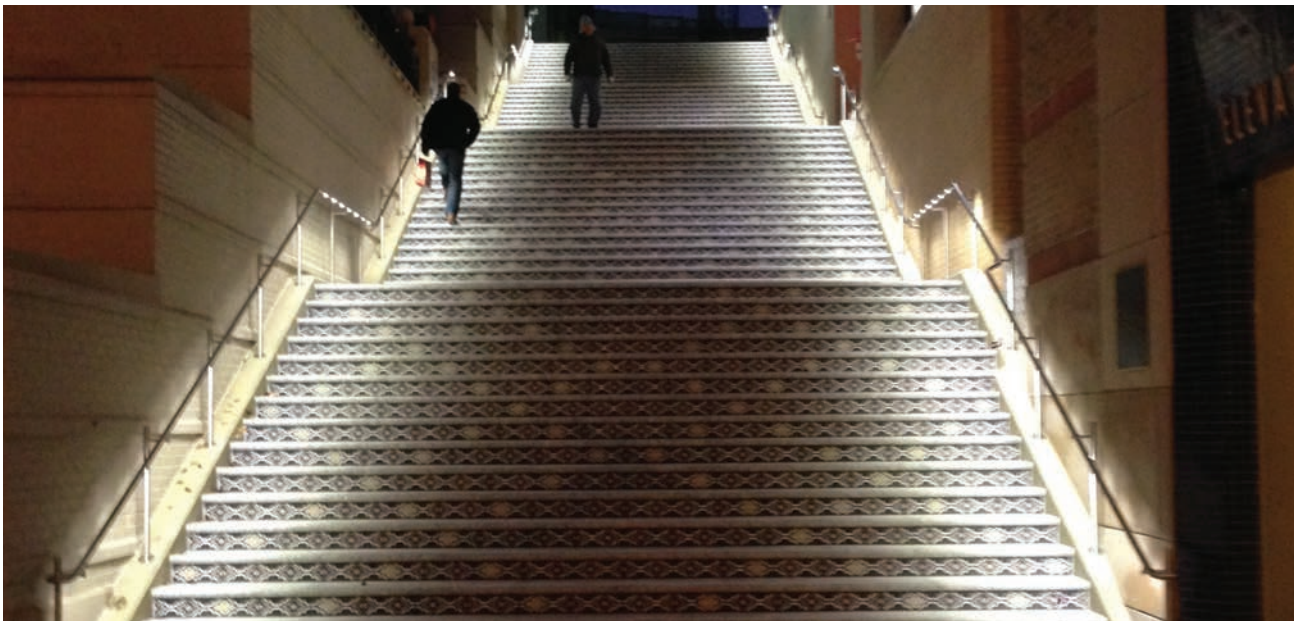
Like all of our ILLUME products, Puck fits any Livers Bronze railing system, or you can specify a custom design.



FEATURES

- 316 electropolished stainless steel LED module
- Fits \varnothing 38-100mm handrail
- Custom Curvature available eg. \varnothing 25mm
- Any metallic surface (*minimum wall thickness 1.5mm*)
- Up to 150 lumens
- 100 lumens / watt
- 1.5W
- IP67
- 95% glare reduction*
- Available in three beams:
 - Standard
 - Asymmetric
 - Symmetric
- Vandal resistant design
- Easy and fast retrofit into existing handrail or surface
- Emergency compatible
- Stand alone solar PV solutions
- UL listing pending
- Custom colors and RGB available

*Compared to Gen3



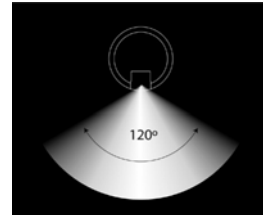
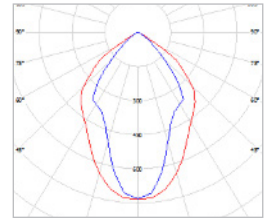
Other Members of the Illume Family

LED illumination is growing exponentially in popularity thanks to its knack for highlighting any architectural style. Livers Bronze is incorporating the energy efficient technology, which we call Illume, as an option attached to any of our handrailing systems. We offer two other LED options; Illume: Linear and Illume: 360. This trio gives you the ability to shine LED lighting in just about every angle, and type of beam imaginable in any outdoor or indoor environment.

STANDARD 120° VERTICAL DOWN SYMMETRIC



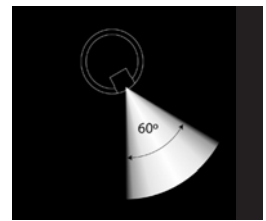
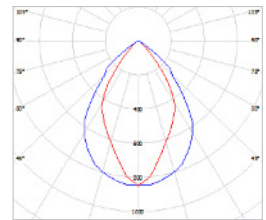
- 120° vertical down orientation in rail
- Perfect for mid-rails
- 3000K symmetric beam
- 0.5m centres, mid-rail
- Uniformity 0.25



60°



- 20-30° orientation in rail
- Highest efficiency
- Very little loss of light
- Up to 150 lumens
- Minimal spill of light onto wall
- 3000K standard beam
- 0.5m centres, 2m wide stair
- Average 200 lux
- Uniformity 0.67



90° VERTICAL DOWN ASYMMETRIC



- 90° vertical down orientation in rail
- Some wall wash
- 3000K asymmetric beam
- 0.5m centres, 2m wide stair
- Average 150 lux
- Uniformity 0.64

