

# SINGULAR Product Data Sheet



4621 East 75th Terr. Kansas City, MO 64132  
Phone (816) 300 2828 | Fax (816) 300 0864  
e-mail [livers@liversbronze.com](mailto:livers@liversbronze.com)

## 1. PRODUCT NAME

Handrailing system bearing the name SINGULAR

## 2. MANUFACTURER

Livers Bronze exclusively manufactures the handrailing system as described on this sheet.

## 3. BASIC USE

Livers Bronze SINGULAR system is a pre-engineered component based railing system, shipped to the jobsite ready to install.

**LIMITATIONS:** SINGULAR railing system is only limited by the materials from which it is fabricated.

Pre-engineered railing should be assembled using the components listed:

**POST:** 42" high guardrail post for tempered or laminated glass infill applications. Shall be powder coated steel or type 304 #4 finished stainless steel spaced at 4' - 0" O.C. maximum. Select post Model number and Mounting plate style from style sheet.

42" high guardrail post for tempered or laminated glass infill applications w/side mounted handrail at 34" above stair nosing. Shall be powder coated steel or type 304 #4 finished stainless steel spaced at 4' - 0" O.C. maximum. Select post Model number and Mounting plate style from style sheet.

**TOP RAIL:** 1 1/2" round steel, stainless steel, aluminum or bronze. (2" round minimum for wood top rail.)

**ASSIST RAIL:** 1 1/2" round steel, stainless steel, aluminum or bronze.

**FINISHES:** A wide selection of colors and textures in powder coat is available for post finishes. Colors are selected from manufacturers standard color charts. Clear matte finish for steel is also available.

Standard circular satin and polished finishes are available for stainless steel and bronze railings. Anodized finishes are not available.

**GLASS:** 3/8" tempered or laminated glass infill furnished by Livers Bronze for field attaching to SINGULAR post.

## 4. TECHNICAL DATA

The SINGULAR railing system is designed to meet performance criteria as outlined in IBC 2012.

## 5. INSTALLATION

Livers Bronze SINGULAR railing system must be attached with fasteners and to surfaces that are approved or selected by the manufacturer, and must be detailed on all shop drawings.

## 6. AVAILABILITY AND COST

**AVAILABILITY:** SINGULAR railing system is subject to current delivery schedules. Each project must be reviewed before scheduling is available.

**COST:** Varies according to quantity and material. Further information may be obtained from Livers Bronze or one of its authorized representatives.

## 7. GUARANTEE

Livers Bronze warrants that its SINGULAR railing system is of sound quality, conforming to standards as stated in part 4 hereof and is reasonably free of defects in material and workmanship. Inasmuch as Livers Bronze has no control over the installation of its products, no other warranty is expressed or implied. Livers Bronze does not warrant against glass breakage.

## 8. MAINTENANCE

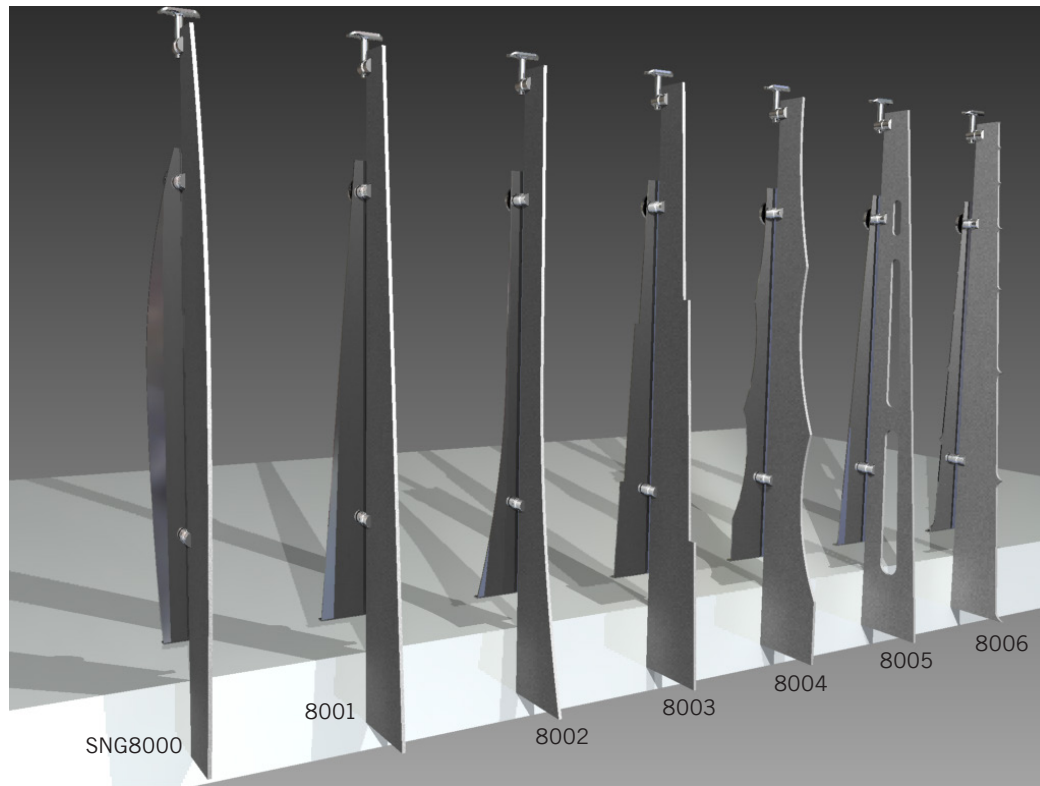
The surface of Livers Bronze material can be kept clean by the use of ordinary soaps and mild cleansers. Abrasive cleaners should not be used.

## 9. TECHNICAL SERVICES

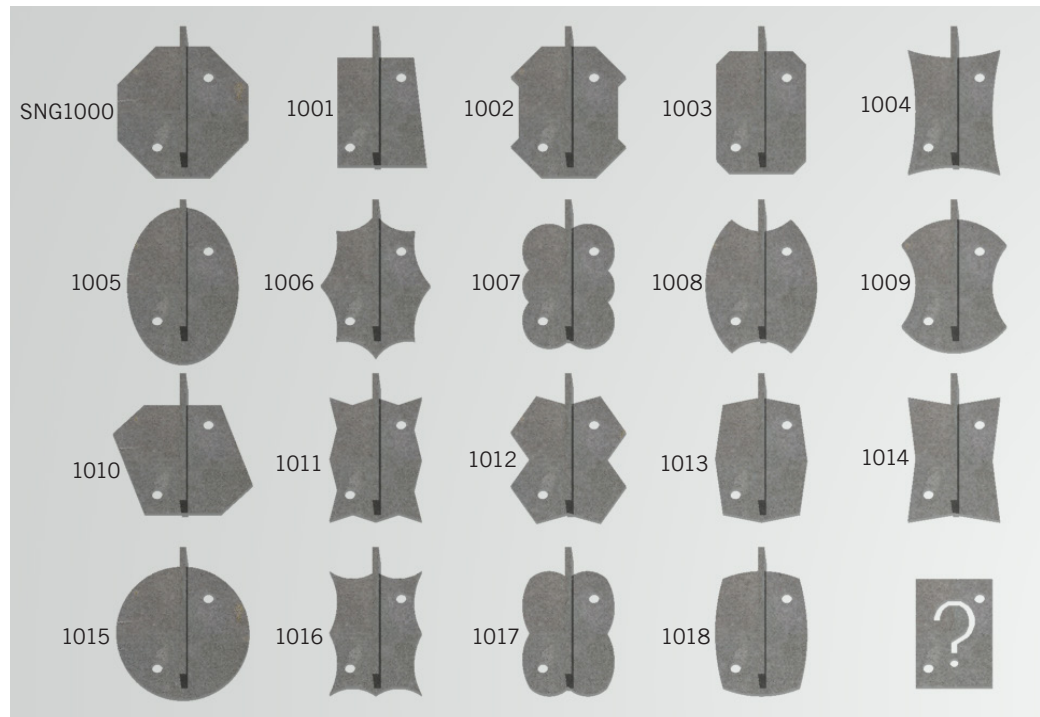
Technical services are rendered direct from Livers Bronze in Kansas City, Missouri.

# SINGULAR Product Data Sheet

Seven distinctive post shape options.

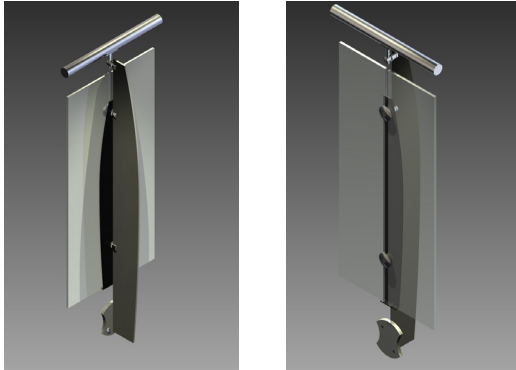


Nineteen post mounting plates to choose from. Or request a custom shape.

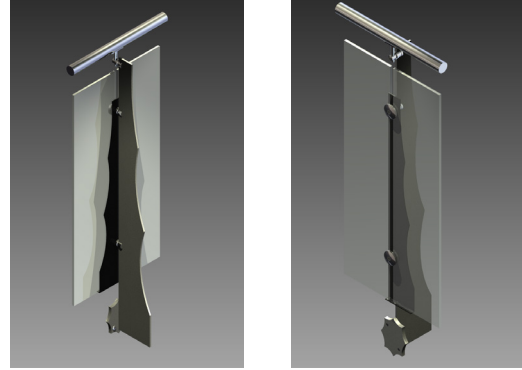


# SINGULAR Product Data Sheet

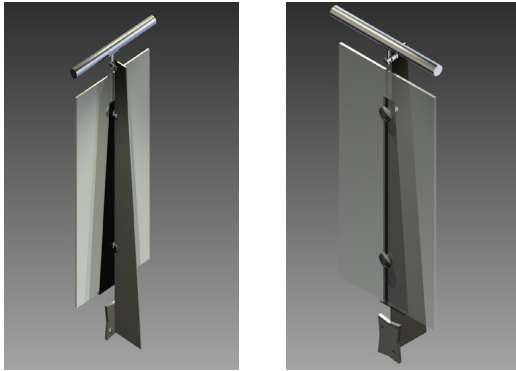
Post shape 8000 with post mounting plate 1009



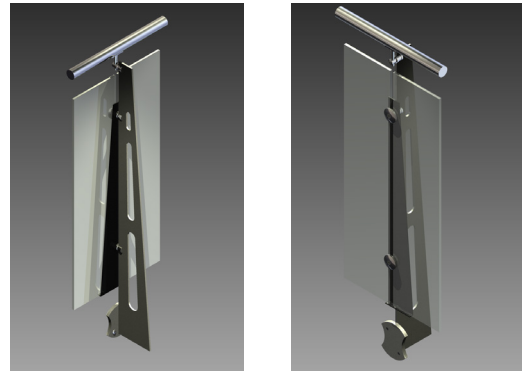
Post shape 8004 with post mounting plate 1006



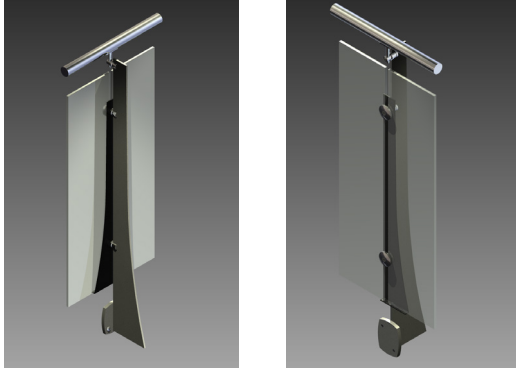
Post shape 8001 with post mounting plate 1014



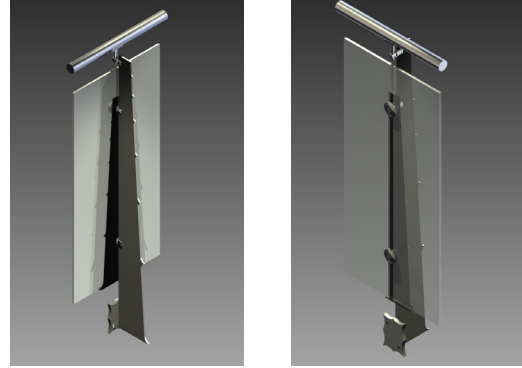
Post shape 8005 with post mounting plate 1009



Post shape 8002 with post mounting plate 1018



Post shape 8006 with post mounting plate 1016



Post shape 8003 with post mounting plate 1002

