

BELMONT SYSTEM



CONTENT

PRODUCT DESCRIPTION 4

**3D DRAWINGS
AND ILLUSTRATIONS 10**

- **CORE-DRILLED CONCRETE10**
- **TOP MOUNT TO CONCRETE 12**
- **SIDE MOUNT TO CONCRETE14**
- **TOP MOUNT POST-WELD TO STEEL 16**
- **TOP MOUNT WELD BLOCK TO STEEL18**
- **TOP MOUNT DRILL & TAP TO STEEL20**
- **SIDE MOUNT TO STEEL22**
- **THROUGH-BOLT TO TREAD24**

CONTENT

- GLASS26
- WIRE MESH28
- PERF-PANEL30

AUXILLARY RAILINGS 32

LED RAILINGS 33

PRODUCT DESCRIPTION

Elevate your architectural design with the Livers Bronze Belmont Railing System, offering unparalleled versatility and sophistication. With multiple post options in various shapes and materials, this railing system allows for ultimate customization. Choose from several post shapes and materials, such as sleek stainless steel or steel to tailor your railing to match your unique vision. Additionally, infill panels in glass, perforated metal, metal mesh, or acrylic cater to various aesthetics, ensuring endless possibilities. Beyond its stunning visual appeal, the Belmont Railing System prioritizes safety while seamlessly integrating into your architectural masterpiece. When designing your commercial masterpiece, it empowers you to create a signature look, where innovation, style, and safety converge. Discover limitless possibilities for your next project with this exceptional railing solution.



CONTENT

4



www.liversbronze.com



Railings@LiversBronze.com

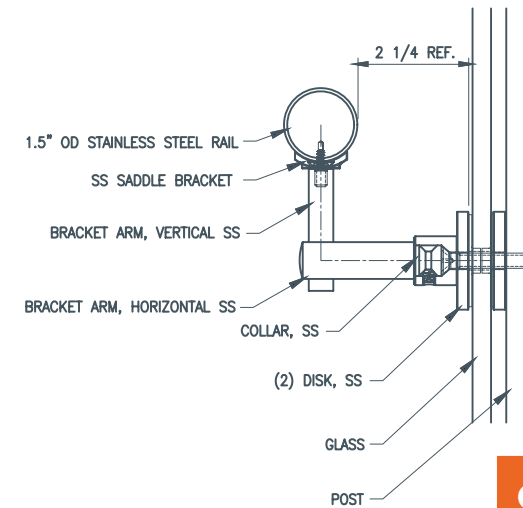
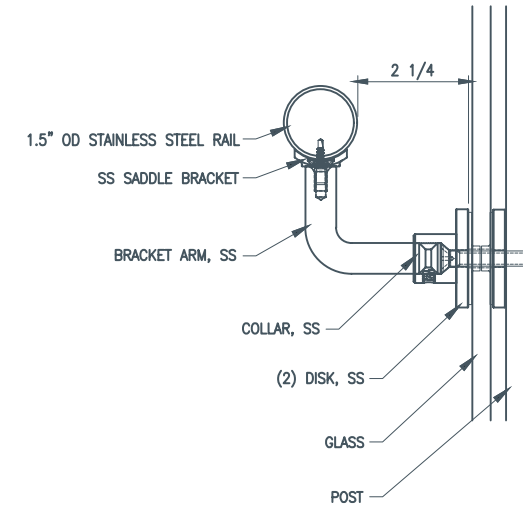


816-300-2828



PRODUCT DESCRIPTION

BRACKETS



www.liversbronze.com



Railings@LiversBronze.com

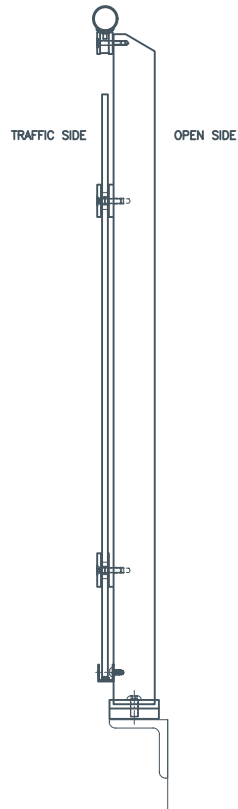


816-300-2828

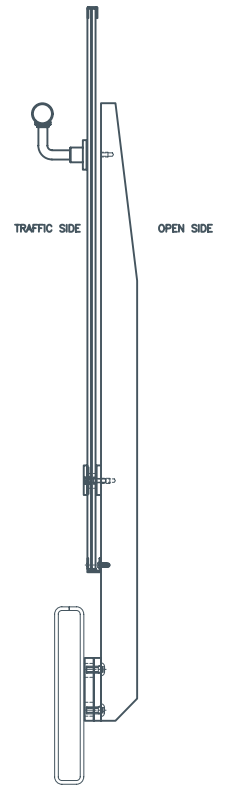
CONTENT

5

PRODUCT DESCRIPTION



BELMONT



BELMONT ANGLE

PRODUCT DESCRIPTION

	MATERIAL	FINISH	SIZE AND SPACING
POST	Stainless steel ½" x 2-1/2" post Steel ½" x 2-1/2" post	#4 or #6 Satin, #7 Polished, Powder Coated or Blackened	Belmont post – 48" o.c. Mounted to embedded steel, steel stair tubes/channels and concrete
INFILL	Laminated / Tempered Glass	Clear, Tinted, Frosted, Frit and Colored Interlayers	7/16" laminated glass or 9/16" laminated glass. Glass laminated using .060 PVB or .060 SGP interlayer
	Acrylic Panels	Select style and color of acrylic panel	3/8" or 1/2" thick acrylic panels
	Perforated Metal Woven Wire	#4 or #6 Satin, #7 Polished, Powder Coated or Blackened Frames for Perforated Metal and Woven Wire are non-directional satin	Framed metal panels are sized to fit between post centerlines and are mounted to the face of the post

CONTENT



www.liversbronze.com



Railings@LiversBronze.com



816-300-2828

7

PRODUCT DESCRIPTION

	MATERIAL	FINISH	SIZE AND SPACING
TOP RAILING	Stainless Steel 1.5" or 2" round and square tubes. Stainless steel rectangular tubes or bars.	#4 or #6 Satin, #7 Polished, Powder Coated or Blackened	Continuous Railing
	Bronze 1.5" and 2" Diameter Bronze extruded shapes	#4 Satin, #7 Polished, Antique finish, all with clear lacquer	
	Hardwood top railings are available in all species of wood.	Sanded only – final staining and finishing is not included	Round, square and complex profiles are available.

CONTENT

8



www.liversbronze.com



Railings@LiversBronze.com



816-300-2828

PRODUCT DESCRIPTION

	MATERIAL	FINISH	SIZE AND SPACING
HAND RAIL	Stainless Steel Tube	#4 or #6 straight grain, #6 circular grain, #7 polished, Powder Coat, Blackened	1.5" diameter tube, 2" diameter tube 1.5" diameter tube with linear LED lighting 1.5" diameter with Individual LED Puck lighting Square tubes, rectangular tubes, oval tubes are available
	Stainless Steel Bar, Steel Bar	#4 or #6 Satin, #7 Polished, Powder Coated or Blackened	Stainless Steel and Steel Bars in all available sizes
	Bronze	#4 Satin / Lacquered Polished / Lacquered Antique / Lacquered	Bronze round tubes, square tubes, rectangular tubes, bars and traditional shaped bronze extrusions. LED bronze railings are available
	Hardwood hand railings are available in all species of wood.	Sanded only – final staining and finishing is not included	Round, square and complex profiles are available. Handrail diameter minimum is 1.75" unless a metal sub-railing is provided

CONTENT



www.liversbronze.com



Railings@LiversBronze.com



816-300-2828

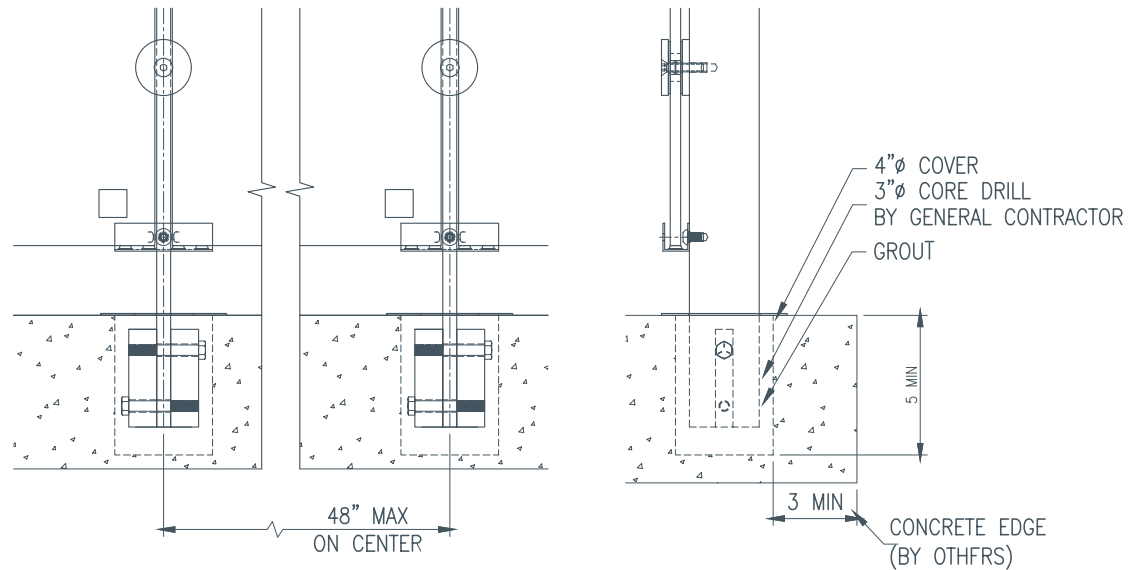
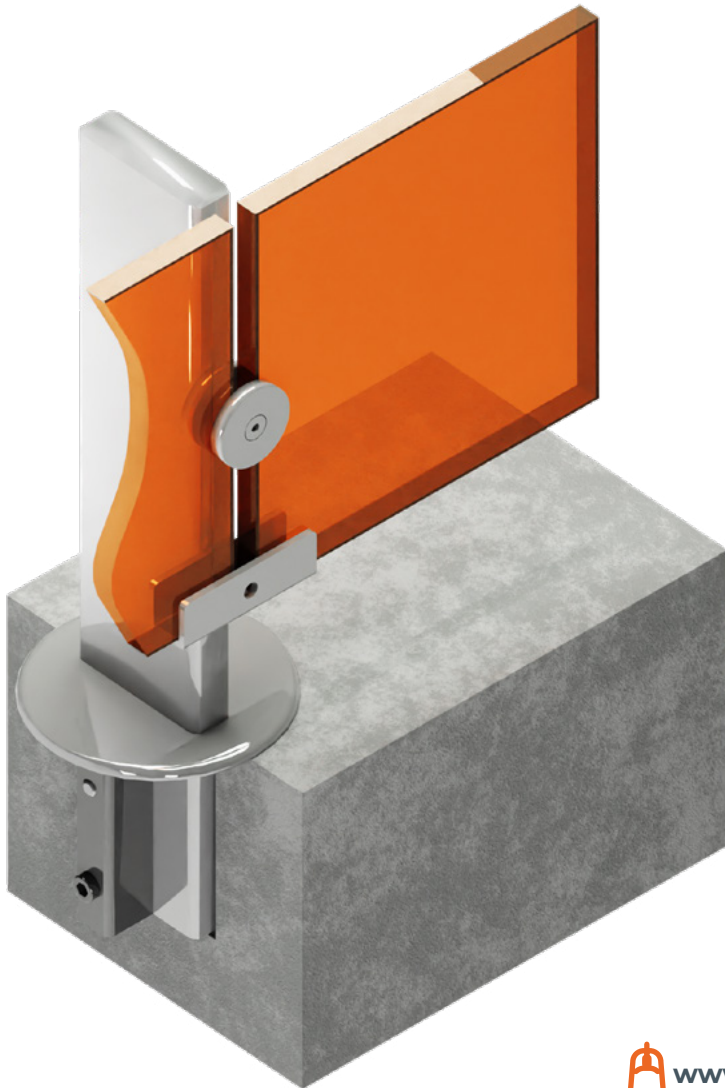
9

Belmont Railing

CORE-DRILLED CONCRETE

Ft. Worth, TX



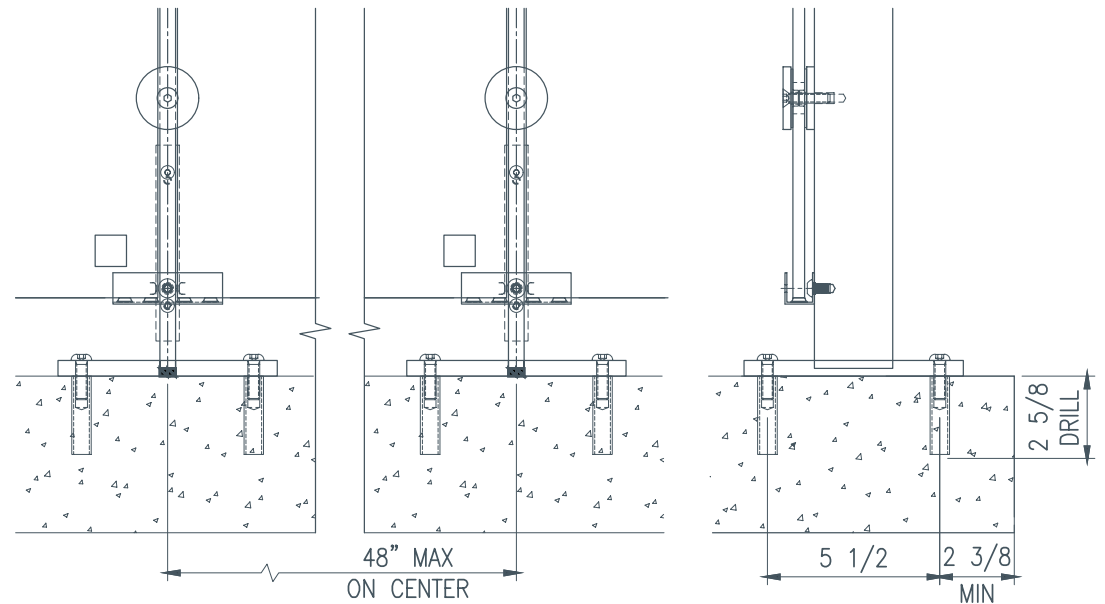
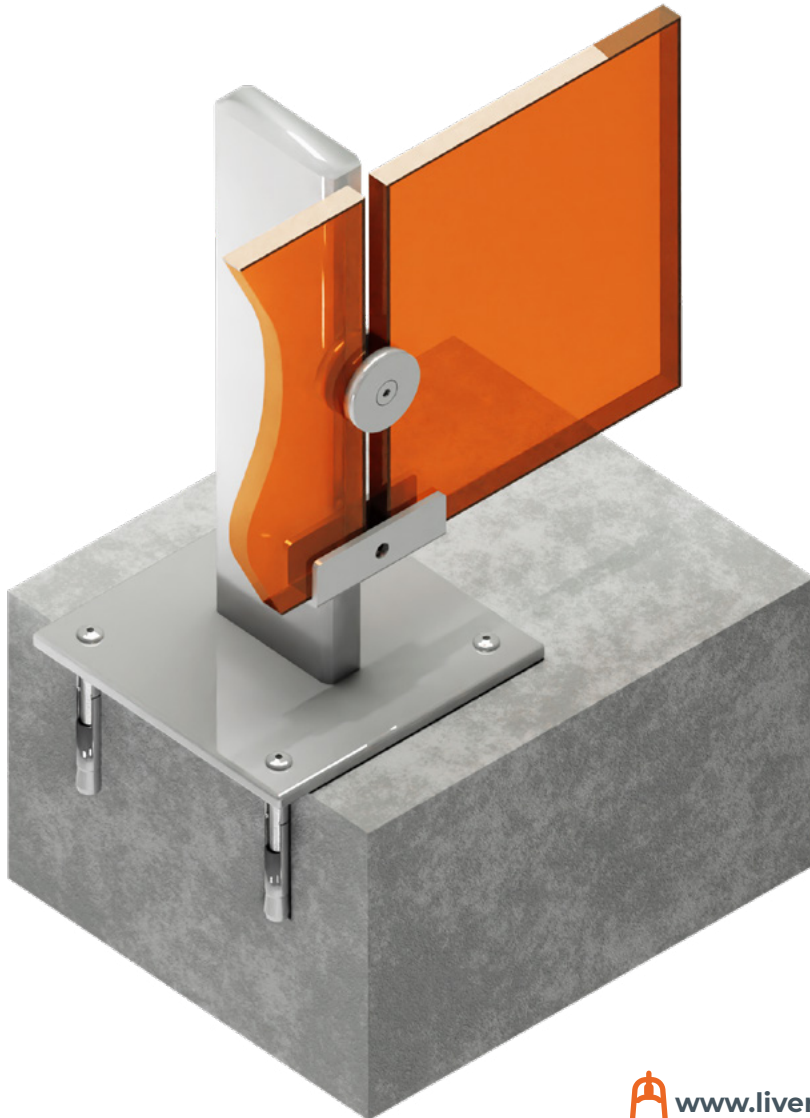


Belmont Railing

TOP MOUNT TO CONCRETE

San Antonio, TX





Belmont Railing

SIDE MOUNT TO CONCRETE

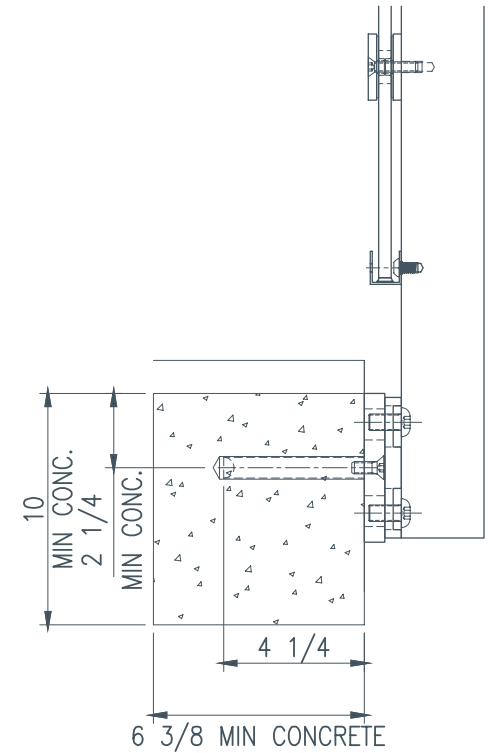
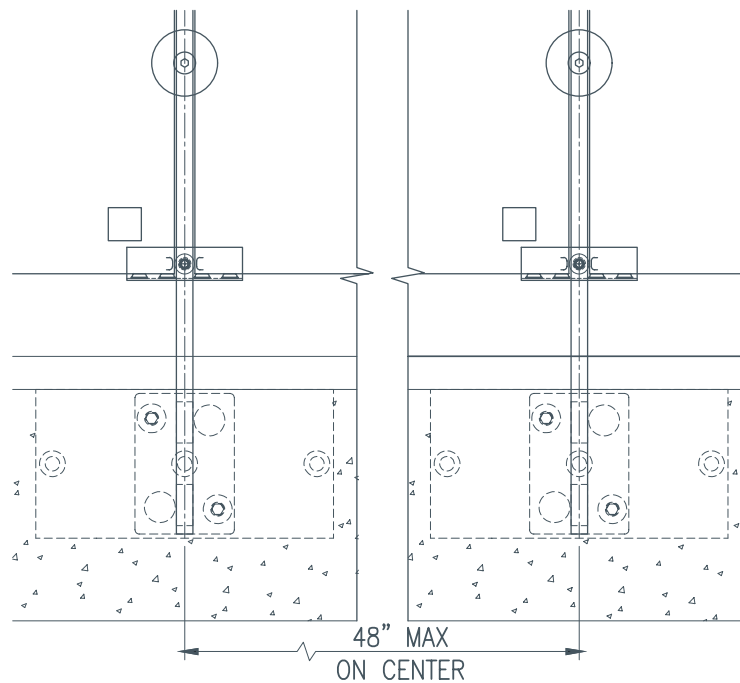
Indianapolis, IN



CONTENT

14

LIVERS
BRONZE



**Belmont
Railing**

**TOP MOUNT
POST-WELD TO STEEL**

Lake Charles, LA

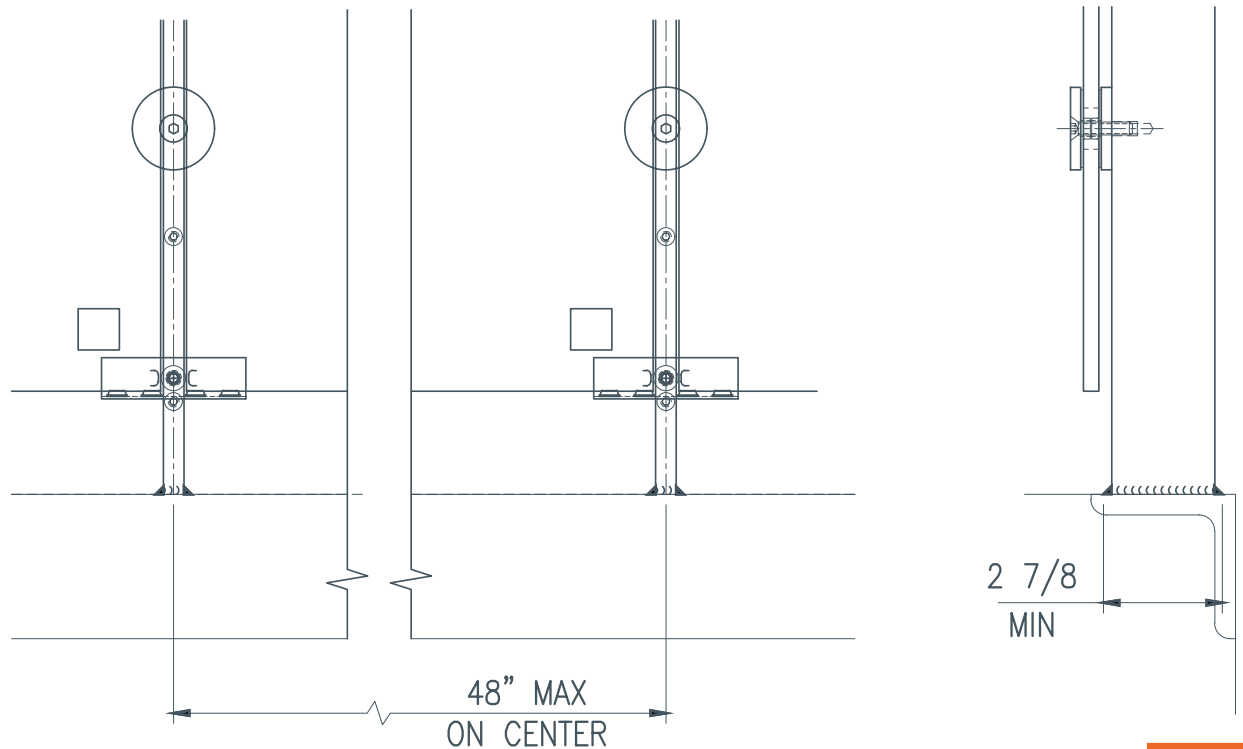
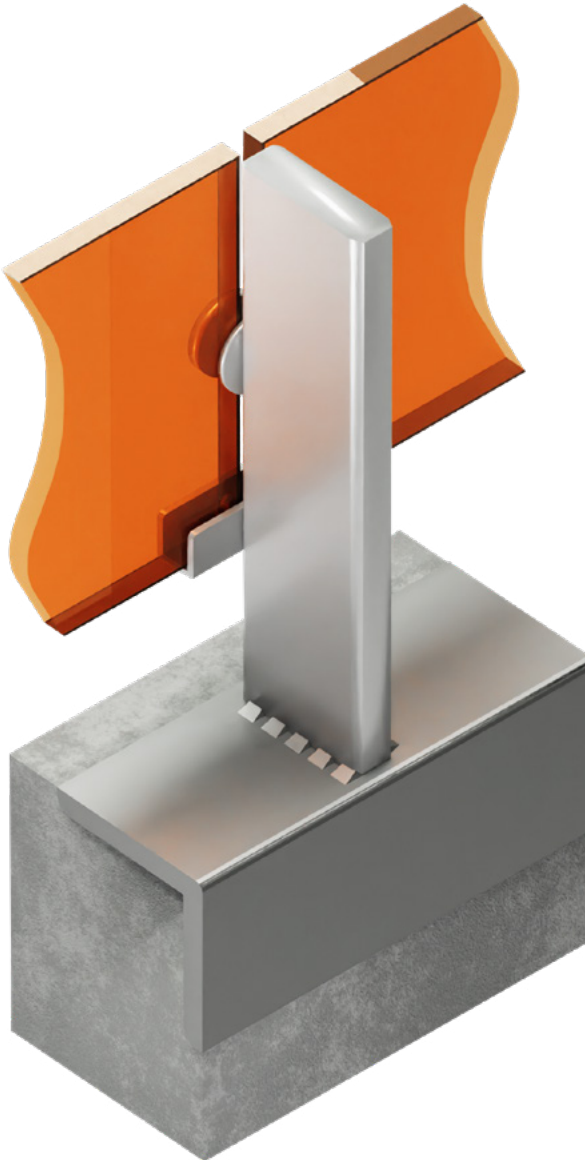


CONTENT

16

**LIVERS
BRONZE**

POST-WELD TO STEEL



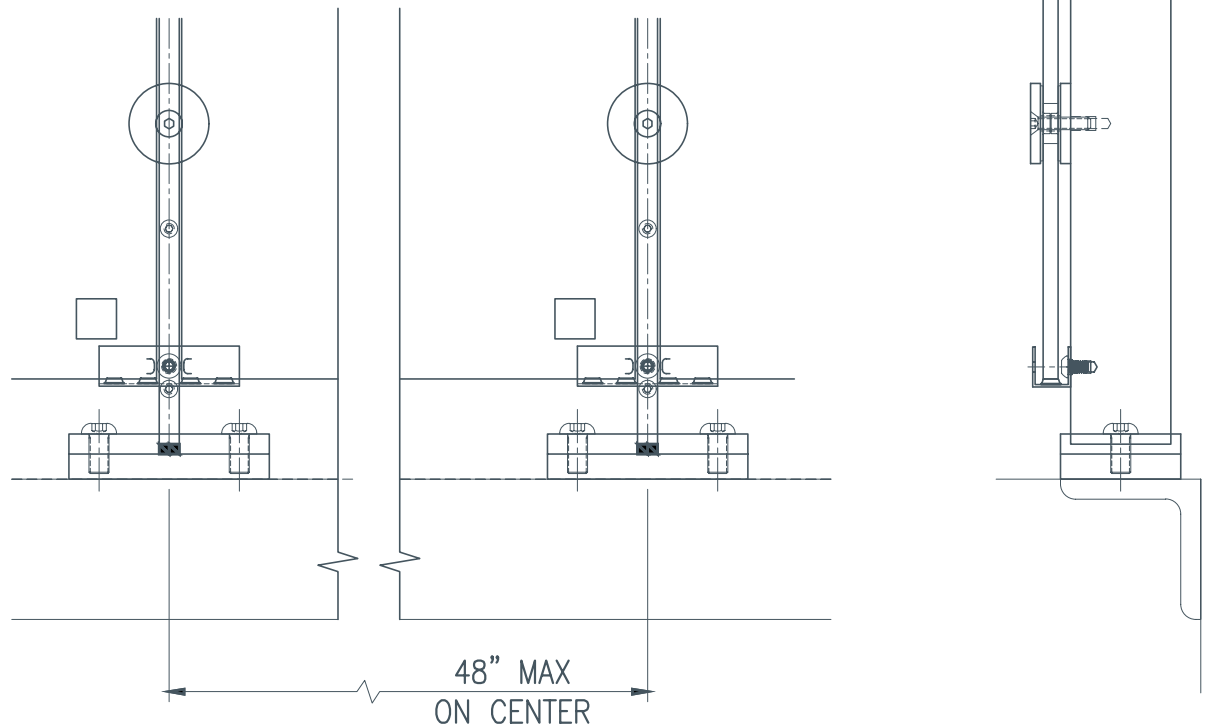
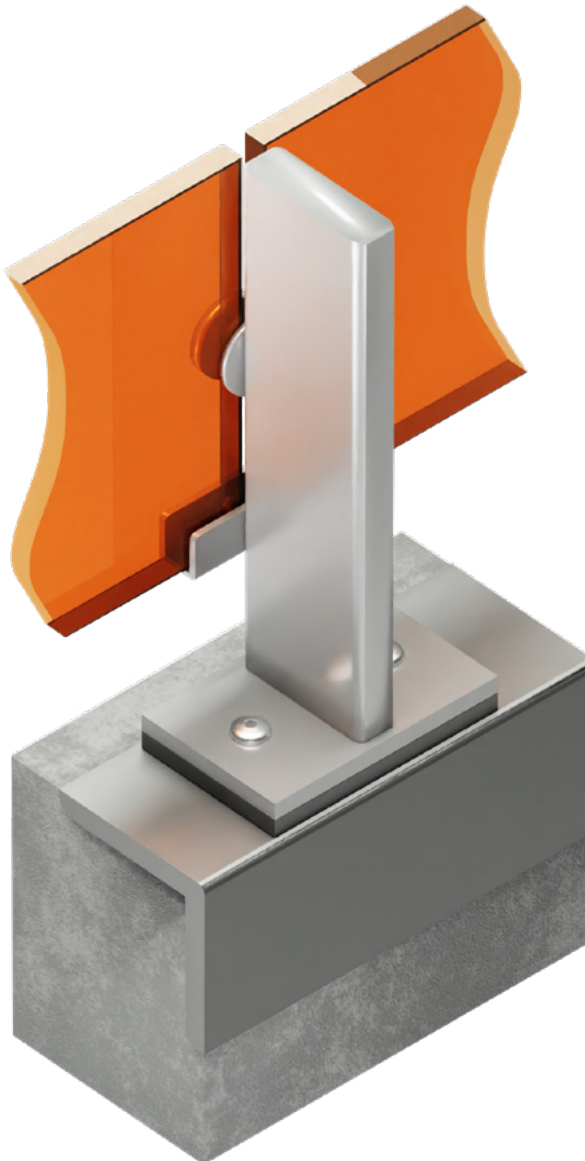
Belmont
Railing

TOP MOUNT
WELD BLOCK TO STEEL

College Station, TX



WELD BLOCK TO STEEL



**Belmont
Railing**

**TOP MOUNT
DRILL & TAP TO STEEL**

Lincoln, NE

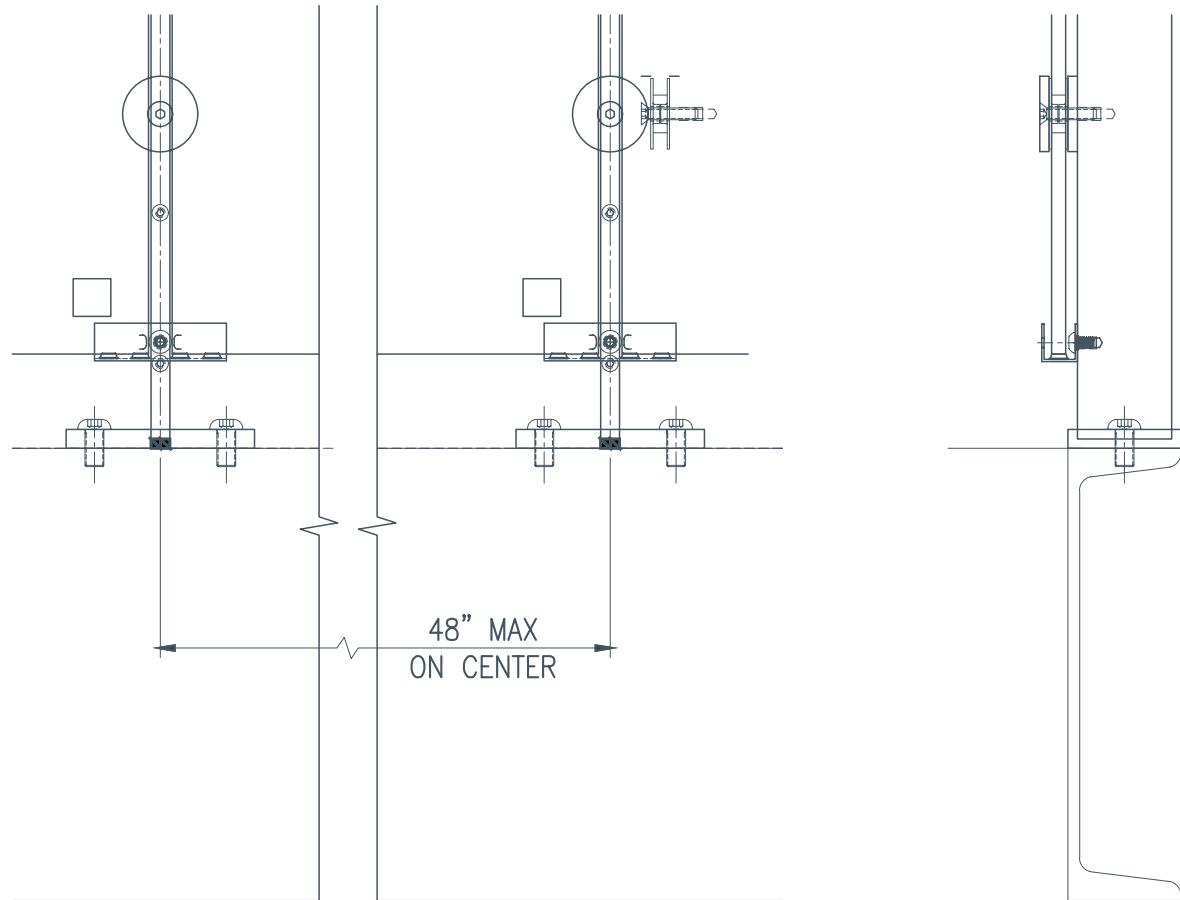
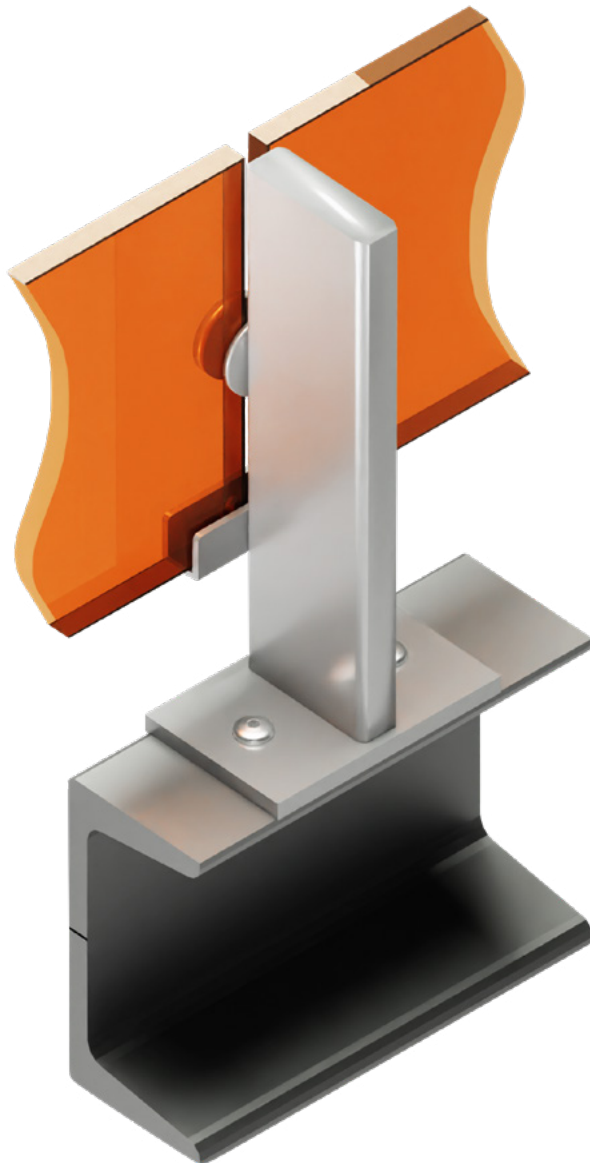


CONTENT

20

**LIVERS
BRONZE**

DRILL & TAP TO STEEL

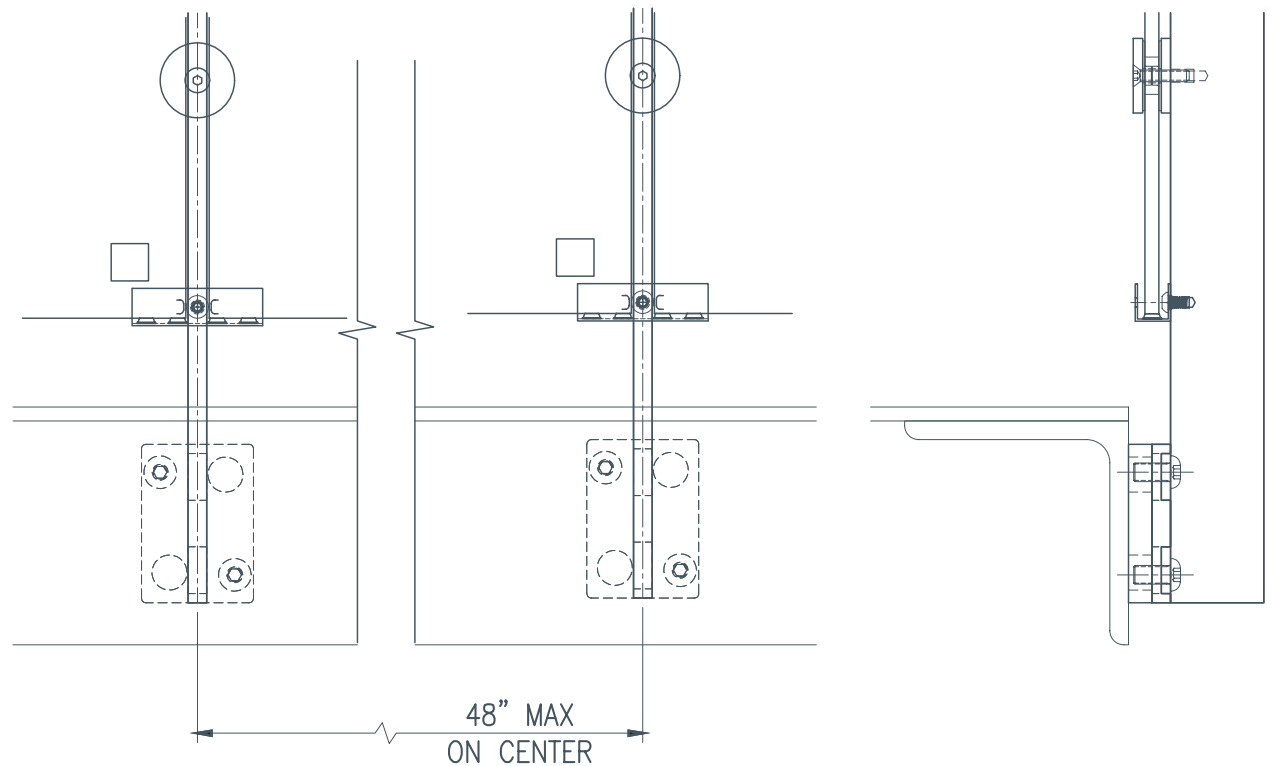


Belmont Angle Railing

SIDE MOUNT TO STEEL

West Des Moines, IA





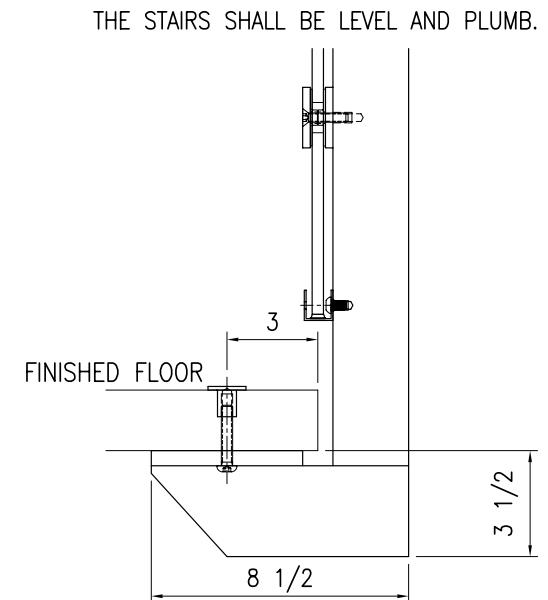
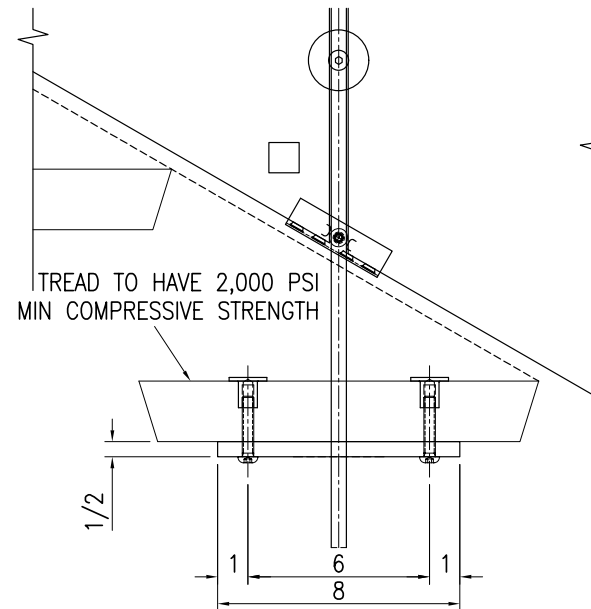
Belmont Railing

THROUGH-BOLT TO TREAD

New York, NY



TO TREAD

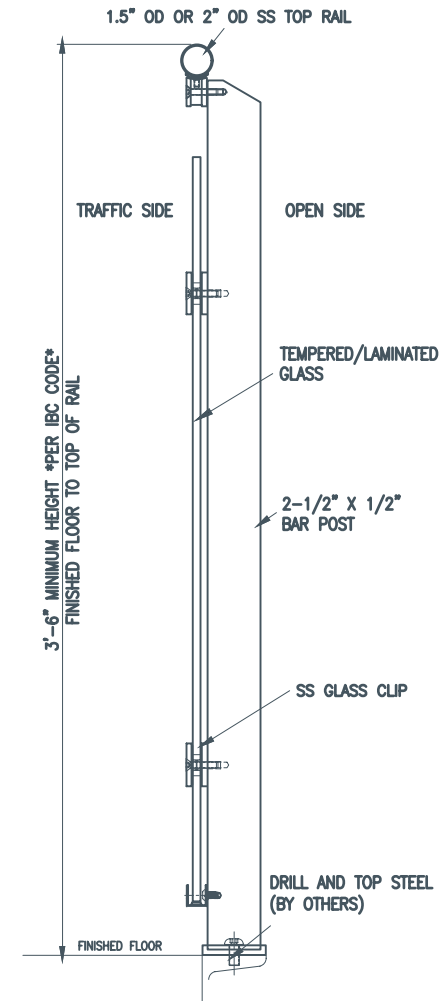
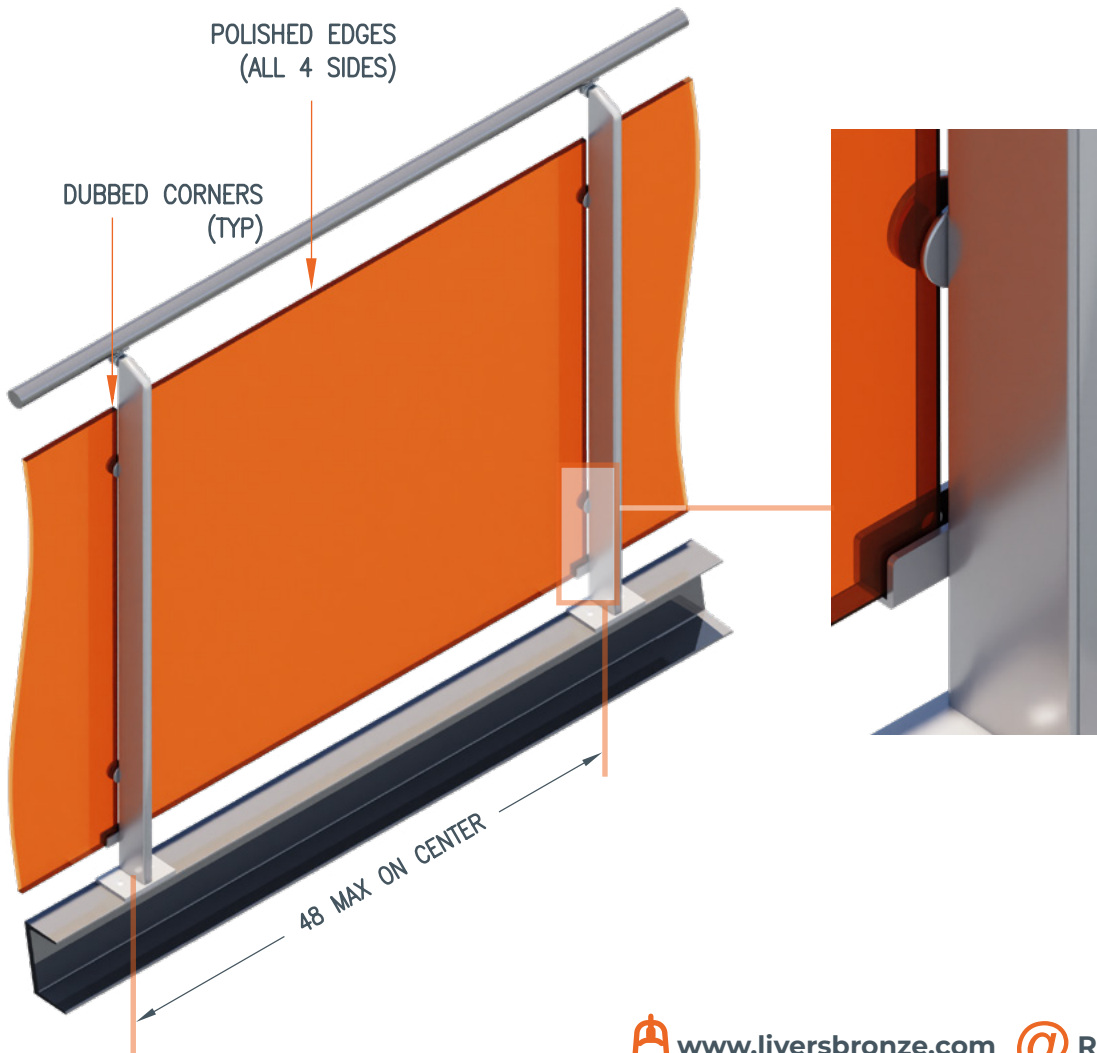


Belmont Railing

GLASS

Troy, OH





Belmont Railing

WIRE MESH

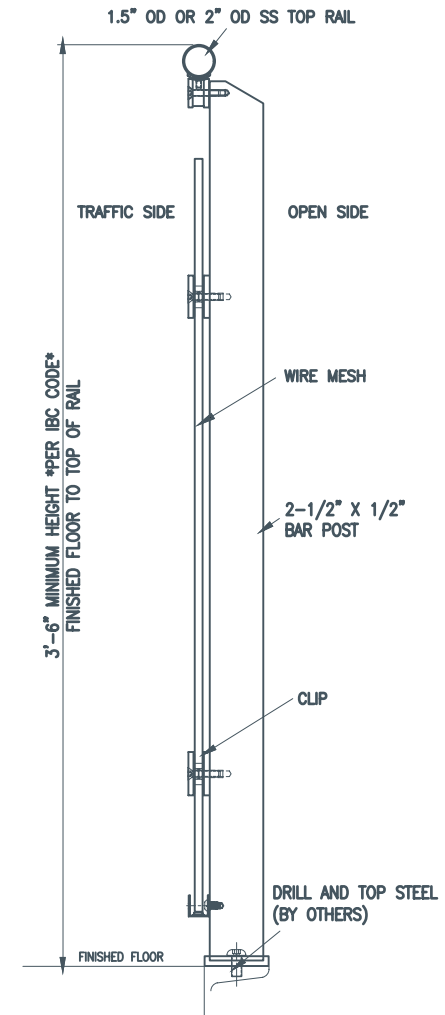
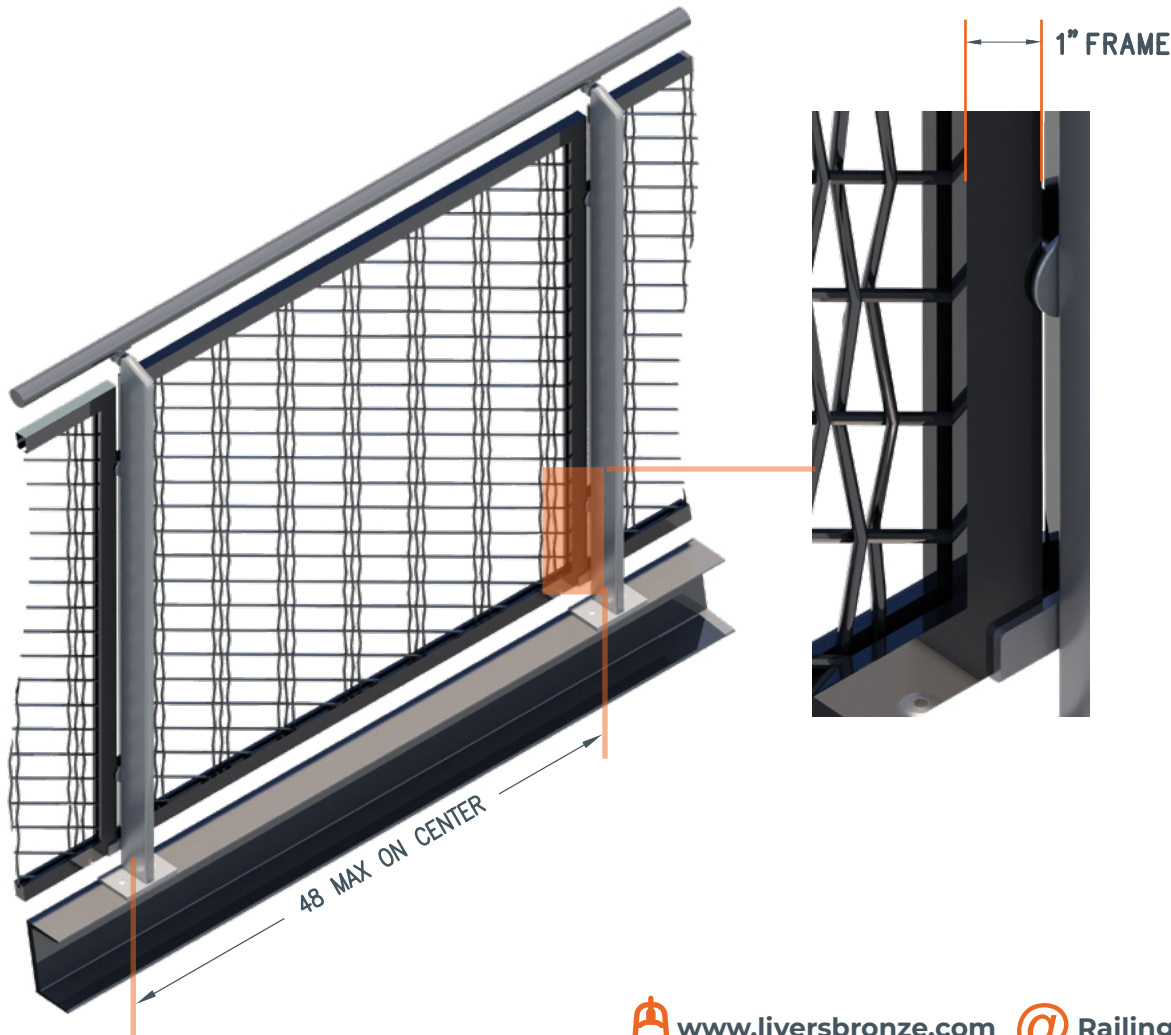
The Colony, TX



CONTENT

28

EVERS
BRONZE

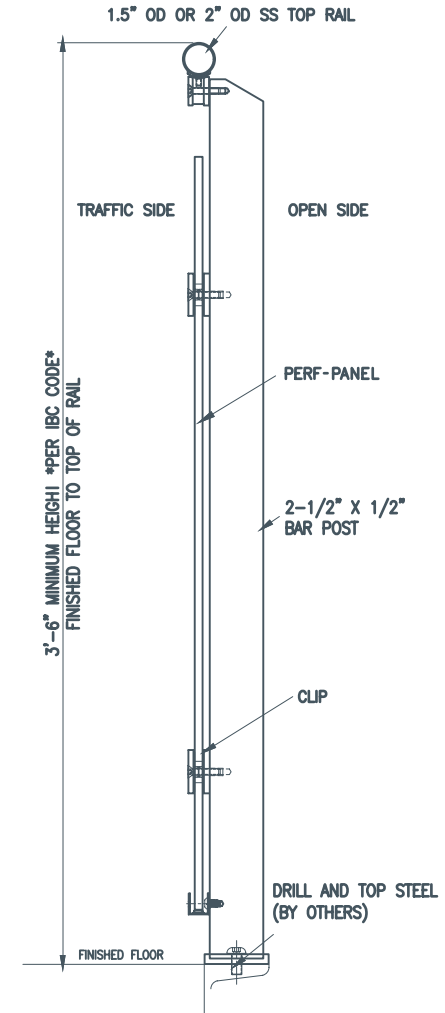
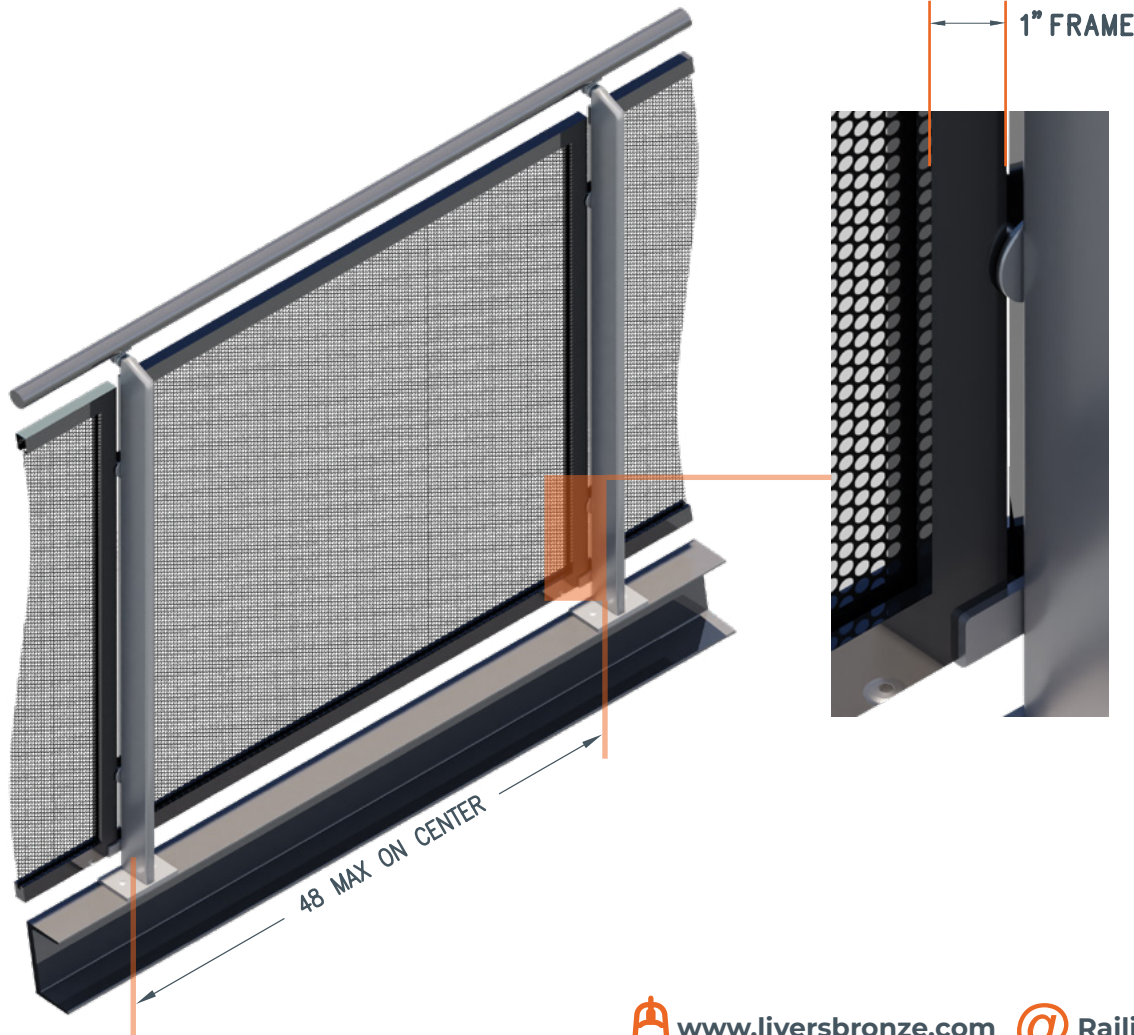


Belmont Railing

PERF-PANEL

Austin, TX







PRODUCT DESCRIPTION

AUXILLARY RAILINGS

Livers Bronze Single Line Railings and Wall Mounted Railings are the obvious companions to any project. Available in all metals and finishes these railings are fabricated to perfectly match the companion railing system. Multiple mounting options for both interior and exterior applications make these railings useful and required throughout your project. To push these railings to another level consider using Livers Bronze ILLUME LED railings – you can customize the layout any way that suits your project requirements. All Livers Bronze railings are made in the USA from the industry leader with over 75 years of experience.

Free standing, Wall mounted, Loop railings, Step railings, Site railings, Single line railings, ramp railings, ADA railings, Cane railings and Double line railings are all available.



CONTENT

32



www.liversbronze.com



Railings@LiversBronze.com



816-300-2828

PRODUCT DESCRIPTION

LED RAILINGS



What makes LED railings from Livers Bronze truly exceptional is their adaptability to all Livers Bronze railing systems. Whether these railings are freestanding, wall mounted or attached to another Livers Bronze Railing system - the LED railing can be effortlessly integrated. This seamless compatibility ensures that you can maintain design consistency throughout your project while enjoying the benefits of energy-efficient LED lighting. LED railings from Livers Bronze are available in linear form or individual puck lighting along with multiple beam spreads and color temperatures. For more information contact Livers Bronze – the specialist in all things railing.



www.liversbronze.com



Railings@LiversBronze.com



816-300-2828

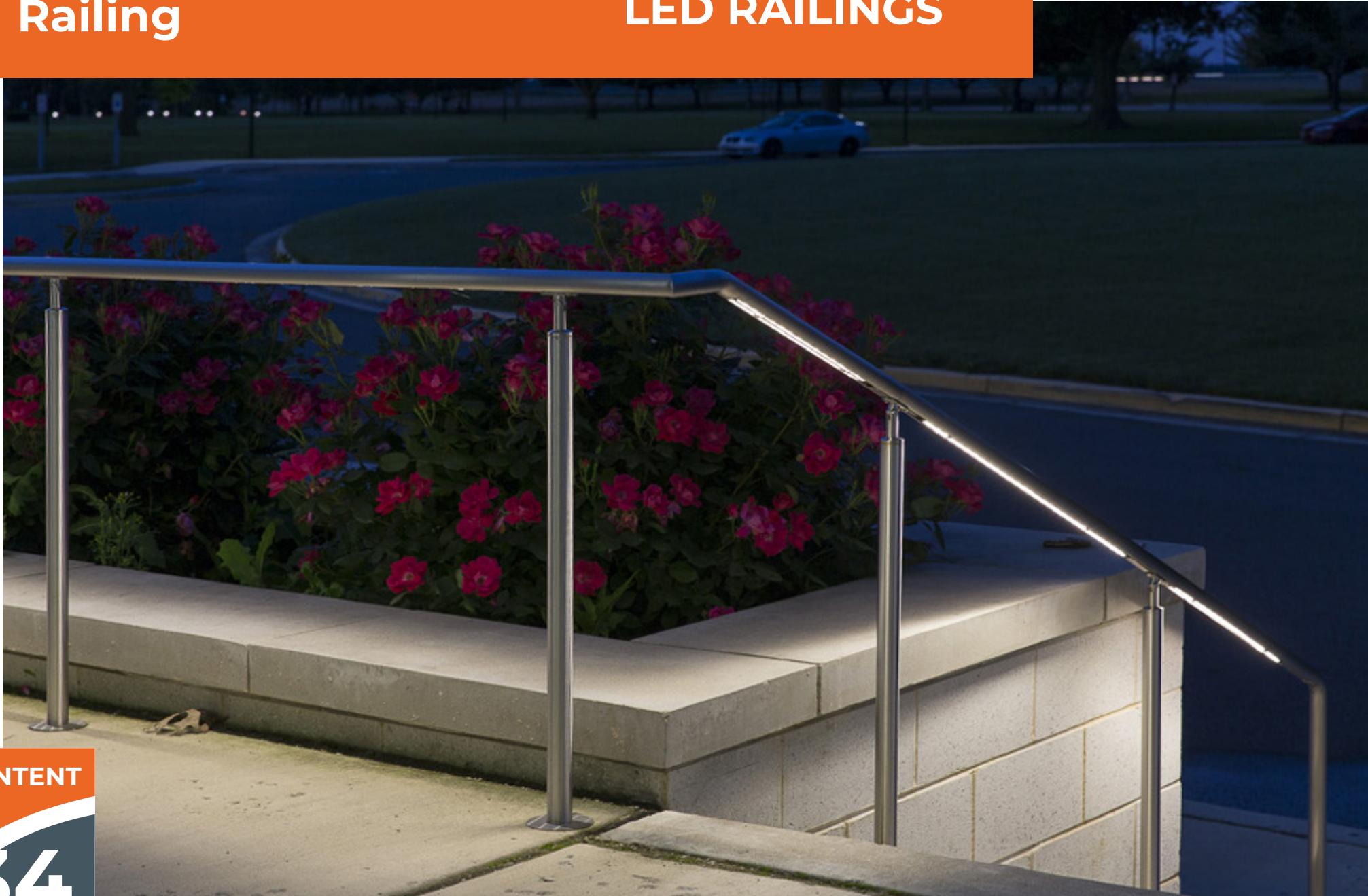
CONTENT

33

Belmont Railing

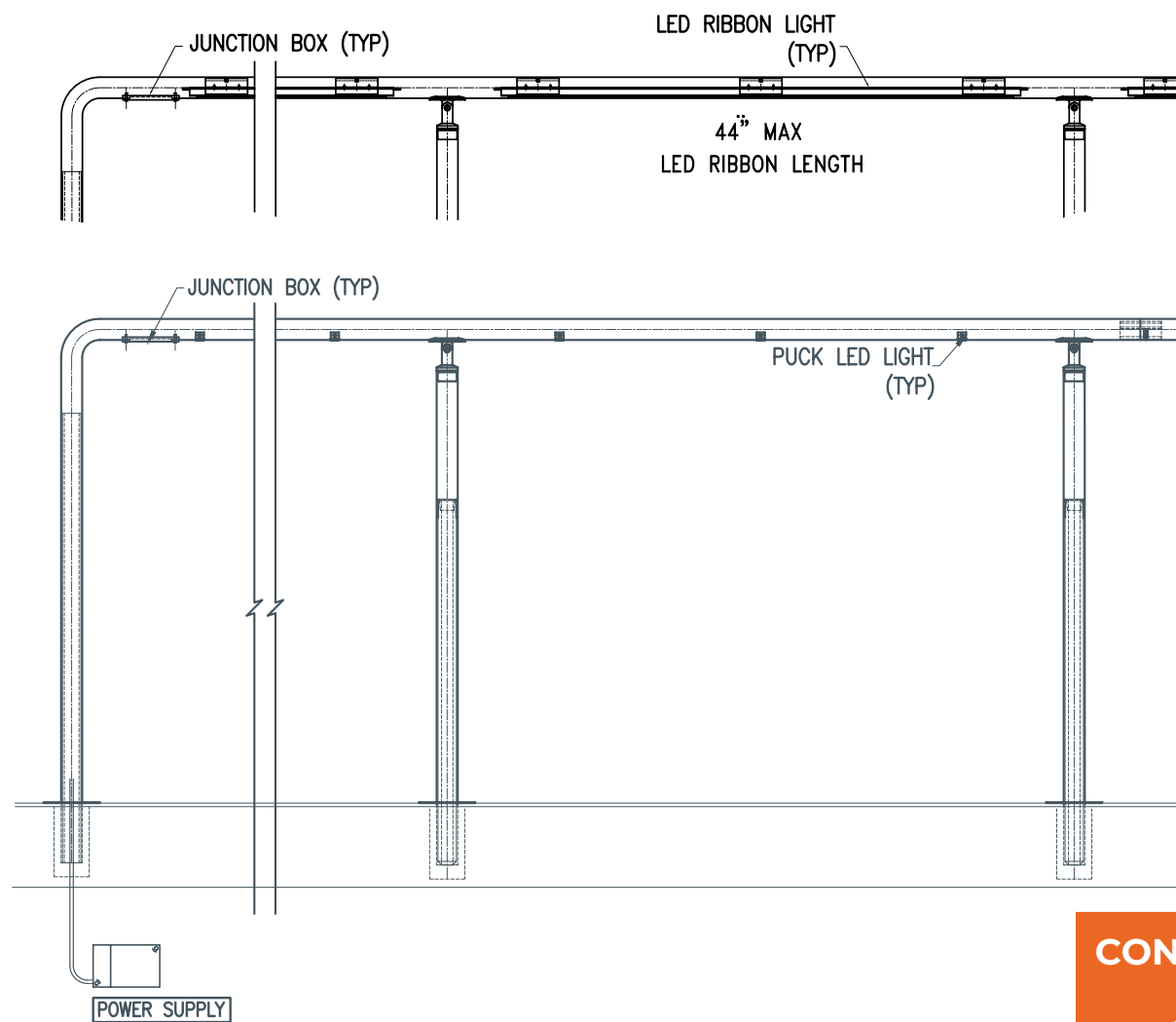
Austin, TX

LED RAILINGS



Belmont Railing

LED RAILINGS





BELMONT SYSTEM

Livers Bronze LLC

4621 East 75th Terrace
Kansas City, MO 64132

Phone: 816-300-2828

www.liversbronze.com

